

Site Rules Cont'd

Identification

All campers are required to have some form of identification when on site. Please ensure that a Group; tee shirt, badge, hat, ID card or scarf etc. Is worn at all times.

This includes all adults as well as young people please.



Noise

Please observe a curfew from 11pm to 7.30am and ensure that any music is only ever played and heard on your site. Thanks.

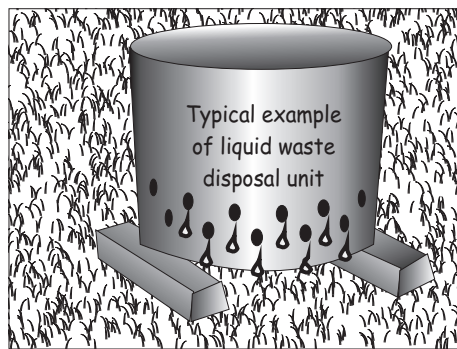
Privacy



It is only common courtesy to ensure that no campers ever pass uninvited through other occupied sites.

Waste disposal

Please do not dig any kind of pit for waste disposal. Solids that cannot be burnt should be placed in the large bins by the toilets. Liquid waste should be strained through a perforated container that is filled with grass and suspended above the ground. Cold and dampened fire ashes should be scattered in the bushes around the edge of site areas.



History

Thriftwood scout camp site was purchased in 1957 by the four districts of Squirrels Heath, Brentwood, Hornchurch and Dagenham (now Barking & Dagenham). It was bought in the memory of the scouts who died during the two world wars.

At the end of the last ice age, soil was dumped from the melting ice, on to land where the trees now grow. The soil is known as terminal moraine and is of poor quality for agricultural purposes, the land was therefore left for growing trees.

During the 1600's the land was part of the Lord Petre's estate and was ideal for breeding pheasants, it was then named a Frith (old English spelling- Frythe), which was a word for sanctuary or underwood. Another word used for this type of woodland was Thrift or Thryve, which means to grow healthily, both words are similar to pronounce and maps of 1750 show the name as Ingrave Frith. Subsequent translations have caused the name to become Thriftwood, unfortunately pheasants are now rare visitors. In 1947, the government placed a 'Tree Preservation Order on Thriftwood, and for that reason and the fact that Thriftwood was in green belt land the Scout Districts were able to purchase all 96 acres for £1000

In 1957 the woodland was very overgrown, sites had to be cleared, water and services laid, toilets built and roads made suitable for vehicles. It took a lot of hard, manual work by dedicated Scouters' and supporters to make Thriftwood the wonderful place it is today.

Activities Fees for 2011

Item or Facility	Max. Number of items	Max. people per session	Equipment, plus facility charge	Instructors per hour
Climb & Abseil	2 Faces	10	£25.00 per hour	£16.50
Climb or Abseil	2 Faces	15	£25.00 per hour	£16.50
Ice Climbing	1 Face	15	£33.00 per hour	£16.50
Archery	1 Range	18	£23.00 per hour	£16.50
.177 Rifles	1 Range	12	£23.00 per hour	£16.50
Kayaks	24 Kayaks	12	£2.80 per canoe/hour	£16.50
Circus Skills	1 Set	20	£12.50 per hour	£16.50
Team Building	6 Games	24	£12.75 per set / hour	£16.50
Sky High Walk	1 Beam	15	£42.00 per hour	Includes Instructor
Crate Stack	1 Area	15	£42.00 per hour	Includes Instructor
Water Walkerz	1 Area	20	£42.00 per hour	Includes Instructor
Canoe River Trip	6 Boats	12	£140.00 per session	Includes Instructor
Bouldering Wall	1 Wall	20	£30.00 per hour	
Pedal Cars	1 Track	20	£31.00 per hour	
Cresta Run	1 Track	24	£27.00 per hour	
Canadian C2	3 Canoes	9	£5.60 per canoe / hour	
Cork Guns	1 Area	12	£11.85 per hour	
Crossbows	1 Set	20	£12.60 per hour	
Orienteering	24 Copies	48	50p per copy	
Woody Walk	18 Copies	36	£1.00 per booklet	
Volley Ball	2 Nets	24	£3.00 per session	
Photo Quiz	10 Sets	30	£1.00 per Set	
Fishing poles	10 Poles	10	£3.50 per rod / session	
Rafting	10 Rafts	40	£9.30 per raft / session	
Pioneering	2 Projects	36	£9.30 per project / session	
Kave Maze	1 Area	20	£18.00 per hour	
Pond Dipping	2 Sets	24	£5.80 per set / session	
Trampolines	2 Trampolines	20	£16.50 per hour	
Earth Ball	1 Ball	24	£21.00 per hour	
Demolition Derby	1 Inflatable	24	£40.00 per hour	
Inflata-Bull	1 Inflatable	20	£26.00 per hour	
Adventure Playground		36	£6.29 per hour	
Hire of facility only ie wall, rifle range, archery field, canoeing lake - £12 per hour.				

Camping Equipment Hire

Marquee per day, 8M x 6 M	= £50:00
Marquee erect	= £20:00
Dining Shelter	= £4.00
Tables each per day	= £1:00
Benches each per day	= 50p
Four man Hike tent per day (erected)	= £7.00
Gas Lamp per day including gas	= £1:50
Double burner Stove per day	= £5:00
Cooking utensils per set per day	= £5:00
Fully equipped site per person per day	= £10:50 (Approx.)

Access to camping areas.



There is vehicular access to all camp sites and you may leave vehicles in your own site driveway, but please do not park along the sides of the tracks as this could



cause obstructions to emergency vehicles. All other vehicles to car parks please. **Under no circumstances** will we permit vehicles to be driven onto any of the grassed camping areas, however many sites have gates which may be opened by site staff to allow you to push caravans and trailers on and off (See Sites marked **G** on map). Check this facility is available if required. Report to the Site Office on your arrival, and allow time before departure for us to inspect the site.

Toilets

Two new toilets and shower blocks have been constructed. Each block has 14 individual shower cubicles with changing facilities. There is hot water to all hand basins. Free hot showers. See web site www.thriftwood.org.uk for details and building progress. The old, existing toilet facilities will remain open, but not their showers.

Campfires

At weekends from May to September a fun sing song is held in the campfire circle to which all are welcome. During the summer holidays, campfire is on Thursday evenings.



Tuckshop

Souvenirs, sweets, drinks, gifts, cuddly toys and badges etc. are on sale in the 'Tuck Shop'. Opens daily at the times displayed (April to October), or at other times by arrangement.

How to find Thriftwood by road

With the aid of the local area map, in the centre brochure, we may be found along the A128 between Brentwood and Herongate. For those coming from the M25 take the exit at Junction 28 along the A1023 towards Brentwood. Pass through four sets of traffic lights and at the end of the High Street there is a double mini-round about, turn right along the A128 towards Ingrave. Go straight over the next set of lights, down the hill and over a railway bridge, immediately over the bridge turn left into Orchard Avenue, keep bearing left and after 150 yards you will find the entrance to Thriftwood, on the left between a small parade of shops and the beginning of Beech Avenue.

Staff

We have four full - time members of staff led by Centre Manager Colin Tilbrook.

The Site also employs staff to provide authorised activity instruction throughout the school holidays and the summer term . During other term-time weekends we rely on the work of our dedicated volunteer Service Crew.

Colin Tilbrook is the Centre Manager, he has been involved in scouting since cubs. He was appointed centre manger on the 1st Feb 2009, but has been at Thriftwood for over 5 years, he has many hobbies including Archery and Kayaking.



Colin



Stu

Stuart Patten (Stu) is our Deputy Manager, he has been in scouting from a beaver and is now an assistant scout leader at his local group. He started here as a volunteer service crew member and has now been with us for over 9 years.

Alex Kerr is our New Assistant Manager. He is involved with a Scout Troop in Chelmsford and is a keen paddler. Alex is new to Thriftwood, but has years of experience working at outdoor centres in France. Alex is a BCU coach, so watch this space for new canoe courses!



Alex



Vikki

Vikki Frost is our Site Assistant and has been with the site as part of our loyal service crew for over 8 years. A competent skills instructor, Vikki is equally at home on the range, wall or office.

Sarah Tilbrook is the Shop Manager, she has been involved in scouting since she was a Venture Scout. She has been a Scout leader and a Group Scout Leader, but has been on a break raising a family.

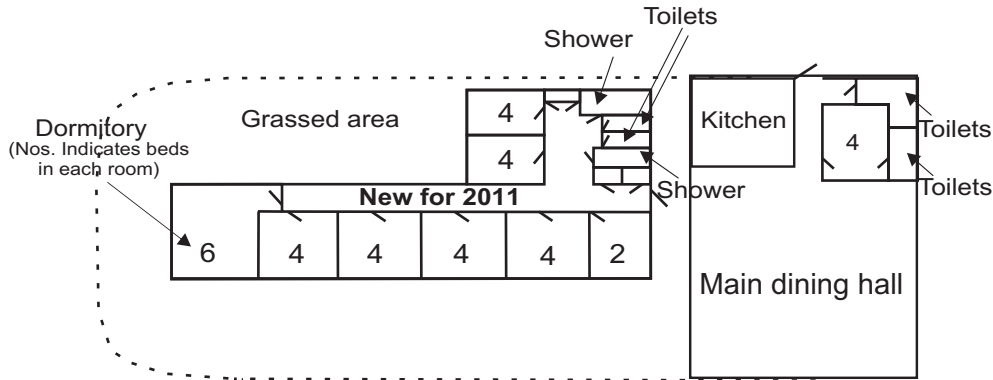


Sarah

Oak Lodge - Pack Holiday Centre

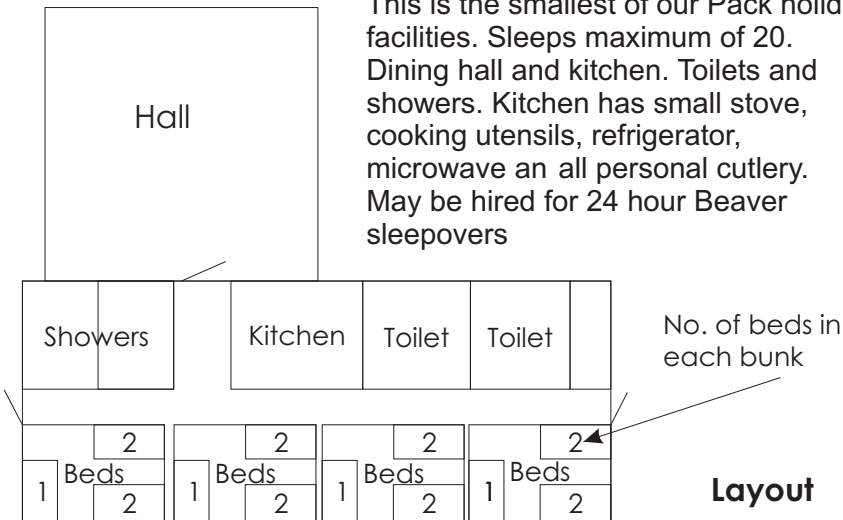
Newly Refurbished in 2010.

The Oak Lodge complex has 8 rooms sleeping a total of 36, is fully centrally heated and carpeted, with a large dining hall, kitchen, and toilets. The main building is double glazed and linked to the dormitory. The kitchen is equipped with a six burner double oven, fridge, freezers, microwave, double sink drainer, all necessary cooking utensils, stainless steel preparation area, storage cupboards and shelves and work tops. Personal plates and cutlery provided. The main hall has 10 large folding tables, chairs for 36. The grassed area to the rear is for your exclusive use to play games or erect tents.



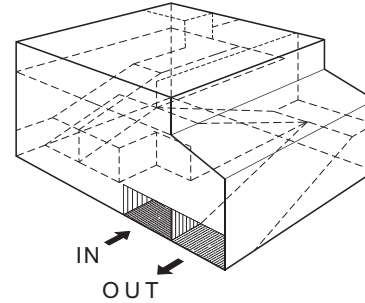
Barcwood

This is the smallest of our Pack holiday facilities. Sleeps maximum of 20. Dining hall and kitchen. Toilets and showers. Kitchen has small stove, cooking utensils, refrigerator, microwave and all personal cutlery. May be hired for 24 hour Beaver sleepovers



Site Activities - Continued

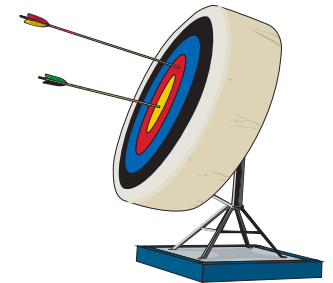
3D Kave Maze



This feature has four levels of tunnels that wind their way up and down until you find your way to the top and then down and out? Crawl around in darkness, or with lights. Lots of fun and thrills. Suitable for all ages and sizes.

Archery

The archery field and/or equipment may be hired. The covered shooting and seating area makes the range suitable for all weathers and is capable of having a max. of six archers shooting and seating for a further twelve. Instructors must be to GNAS standards. Lost arrows charge - £4:00.

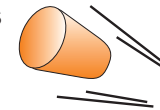


Sky High Walk

This section of a high ropes course comprises of a 14 meter long beam that is suspended 6 metres from the ground. One or two participants then climb the cargo net to a platform from which they then walk along the beam, dance, hop and finally descend by the sloth, diver or crucifix!. Walkers are fitted with a full body harness and belayed at all times.

Cork Guns

An indoor range is provided for these safe, fun weapons that fire corks at card targets. Fun for all ages.



Volley Ball

Net, guylines and pegs, plus ball, may be hired for morning or afternoon and erected on your own site.

Water Splash

During the six week summer holidays we hold a water activity event on Sapper Lake every Wednesday, 2:00pm to 4:30pm. Activities include; the black hole water slide, surfing 'thriftwood' style, canoe seal launch, aerial water zip line, water canon, water wars, water walkerz, plus inflatables. Cost £5:50 per person. See web site for video.

On Site Activities (Cont'd)

Inflatables

Water Walkerz

Two inflatable, 2 metre diameter, clear plastic balls, with waterproof zip allow you walk on water (if you can keep your balance?) Tethered to the bank so you cannot get lost or drift away. Rides limited to 5 minutes of duration.

Demolition Derby

This inflatable has four podiums on which participants stand. With aid of a suspended ball each then tries to knock the others off their podiums. Safety netting ensures you cannot fall out and inflated mattress cushions the blow when landing.

Earth Ball

1.5 meters in diameter this ball can be pushed around the inflated arena. Teams of 6 maximum per side try to score as many goals as they can.

Annual Events

National Pedal Car Olympics

This event takes place over the second weekend in January each year. For 2011, the dates are 7th - 9th January. Open to Scout, Guides, Explorers, and Rangers. Teams of four compete in up to eight disciplines; individual track, team relay, sprint, tractor pull, driving skills, endurance, pursuit, and blindfold pairs course. Prizes of £150, £100 and £50 for top 3 teams. Separate female team award. Evening entertainment, all other on-site activities free. Costs from £28.00. Canteen facilities.

TLC (Thriftwood Leaders only Camp)

This event is a chance for adults to chill out and be pampered. Hot tubs, massages, bar, all on site activities, and evening entertainment for Adult Leaders, helpers, group members and their immediate family only.

Activity Authorisation Courses

We provide a number of Leader Training course for activity authorisation. Climbing & abseiling, rifle shooting, archery, canoeing, first aid (First Response). For details see our web site www.thriftwood.org.uk or ring Colin for more information.

On Site Activities (Cont'd)

Pedal Cars

This activity is suitable for all ages. Cars suitable for those from 6 - 60. A tarmac circuit is laid out, with car tyres around the edges to cushion the blow if steering is a problem. This makes it a relatively safe activity so long as you apply the brakes? Up to five cars can race at a time. Safety helmets provided.

Trampolines

We have two trampolines, 14 ft dia. for you to try out your jumping skills. Plenty of exercise & fun in for those who just want to bounce.



Crossbows

These are safe, fun toys that fire rubber sucker darts at plastic targets and may be used on Your own site. Simple to use .



Pond dipping

A great way to explore the depths of those murky ponds that make Thriftwood such a wonderful place to see nature at it's best. Nets, viewers, catcher jars, and tubs are all part of the kits supplied, along with explanatory notes and pictures to help those in charge.



Adventure Playground

Our adventure playground can be hired by the hour, so that you can have exclusive use of all the apparatus. The 'Zip Line' may also be available if you obtain the key from the Site Office. Preference is given those who have paid.

Toboggan - Cresta Run

The slope is situated behind Site 1. A thrill of a lifetime. The surface is made from polished birch ply and has four lanes that guide the toboggans down the slope. Descending some 5 metres over a distance of 50 metres will ensure instant take off. Covered safety run off at the bottom ensures a smooth slow down. Our home built sleds can achieve speeds of up to a maximum of 25 mph, in the hands of the expert driver. Helmets to be worn.